



**English Ashlar** replicates masonry work dating back to the 12th century. The heavy textured surface gives this stamp the natural and rugged look common in European structures and old world architecture.



**Ashlar Roman Slate** a classic Western architecture slate pattern also dating to the 12th century. Stamped in a three part pattern to create open concept placement.



**Large Ashlar New England Slate** with a larger, bolder size of stone. This stamp is also groutable for an upgrade in appearance and finish. Excellent for driveways.



**Cut Stone Cobble** creates a more uniform pattern with a distinctive background texture. Create a once laborious technique using today's stamped concrete styles.



**London Cobble Stone** will bring the look of an English Garden to your backyard. This pattern offers larger, wider cobblestones that vary in size.



**Appian Cobble Stone** is a historic pattern and replicates the Via Appia, the most celebrated road in Italy. It was built in 300BC by Roman Censor Appius Claudius. A beautiful look for driveways.



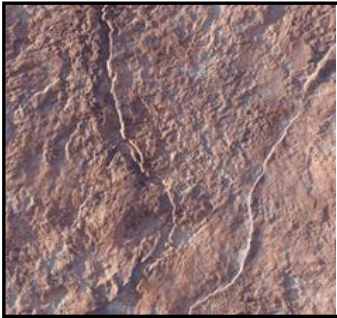
**Random Sandstone Hammered Edge** is a popular style for those looking to create a natural stone look. It is also possible to add grout in the joints to create added beauty in the finish.



**Herringbone Used Brick** refers to a pattern of columns in short parallel lines moving both horizontally and vertically. The texture mimics the pitting of aged brick. \***Other available patterns include Basketweave and Running Bond.**



**Soldier Course Band** provides an accent to seamless stamp and a definitive border for straight lines.



**Seamless Old Granite Stone** is a very popular seamless stamp which creates the unique texture found in natural flag stone. A softer stamp which works well in small and large areas alike. \* **Other slate textures include Italian and Belgian Slate.**

**Other available styles:**



Don't see the style you like here? Let us know what it is your thinking of and we'll try to find it for you, chances are we can do it. Thank you for considering Defined Concrete Services.